

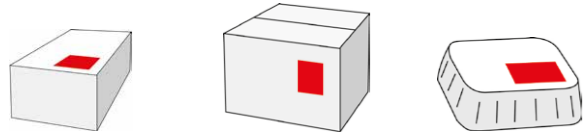
TOUCH-ON APPLICATOR

Timed touch-on applicator LA-TO for high performance applications



- LA-TO IN A NUTSHELL**
- ✓ Top
 - ✓ Side
 - ✓ Bottom
 - ✓ Stopped products
 - ✓ Moving products
 - ✓ Products with fixed height

- Best suited for labels requiring a firm application pressure
- Easy exchange of labeling pads for different label sizes
- Stroke length up to 380 mm
- Robust industrial design



TECHNICAL SPECIFICATIONS	
Label width	30–160 mm
Label length	30–210 mm
Capacity*	Up to 100 labels/min
Application accuracy*	max. +/- 1 mm
Compatibility	ALX 92x, ALX 73x ALS 20x, ALS 256, ALS 272, ALS 306

TOUCH-ON APPLICATOR

Touch-on applicator with blow function LA-TO Blow (LA-TO BO)



- LA-TO BO IN A NUTSHELL**
- ✓ Top
 - ✓ Side
 - ✓ Bottom
 - ✓ Stopped products
 - ✓ Moving products
 - ✓ Products with fixed or variable height

- Suitable for labeling sensitive items with uneven surfaces and/or variable heights
- The last part of stroke length is overcome by blowing the label onto the product
- Stroke length up to 380 mm



TECHNICAL SPECIFICATIONS	
Label width	50–110 mm
Label length	50–160 mm
Capacity*	Up to 100 labels/min
Application accuracy*	+/- 5 mm
Compatibility	ALX 92x, ALX 73x ALS 20x, ALS 256, ALS 272, ALS 306

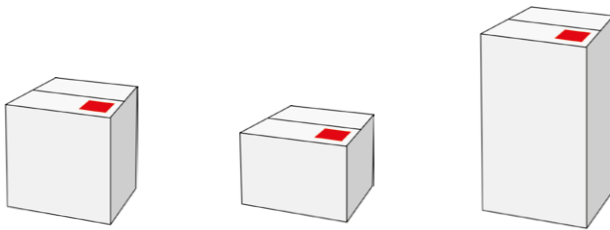
TOUCH-ON APPLICATOR

Touch-on applicator with sensor LA-TO Flex (LA-TO TD)



- LA-TO TD IN A NUTSHELL**
- ✓ Top
 - ✓ Side
 - ✓ Bottom
 - ✓ Stopped products
 - ✓ Products with variable heights

- Ideal for labeling products with variable heights
- Applicator returns as soon as the applicator plate encounters resistance
- Easy change of label pads to apply different sized labels
- Stroke length up to 380 mm



TECHNICAL SPECIFICATIONS	
Label width	30–160 mm
Label length	30–210 mm
Capacity*	Up to 100 labels/min
Application accuracy*	max. +/- 1 mm
Compatibility	ALX 92x, ALX 73x ALS 20x, ALS 256, ALS 272, ALS 306

BLOW-ON APPLICATOR

Gentle blow-on applicator LA-BO for sensitive products



- LA-BO IN A NUTSHELL**
- ✓ Top
 - ✓ Side
 - ✓ Bottom
 - ✓ Stopped products
 - ✓ Moving products
 - ✓ Contactless

- Contactless labeling of sensitive products
- Suitable for even and uneven surfaces
- Allows blow distances of up to 10 cm away from the applicator
- High application accuracy even at high speeds
- Sliding bars enable fast and easy setting of label size
- Pivoting applicator allows comfortable material change



TECHNICAL SPECIFICATIONS	
Label width	30–100 mm
Label length	30–100 mm
Capacity*	Up to 160 labels/min
Application accuracy*	+/- 1 mm
Compatibility	ALX 92x, ALX 73x ALS 20x, ALS 256, ALS 272, ALS 306

SWING-ON APPLICATOR

Swing-on applicator LA-SO for logistic applications



- LA-SO IN A NUTSHELL**
- ✓ Leading edge
 - ✓ Top
 - ✓ Side
 - ✓ Moving products

- Ideal solution for the application of labels onto the leading edge of moving products
- Suitable for individual items or boxes
- Robust industrial design for logistics environments



TECHNICAL SPECIFICATIONS	
Label width	80–150 mm
Label length	80–210 mm
Capacity*	Up to 18 labels/min
Application accuracy*	Max. +/- 2 mm
Compatibility	ALX 92x, ALS 20x, ALS 256, ALS 30x

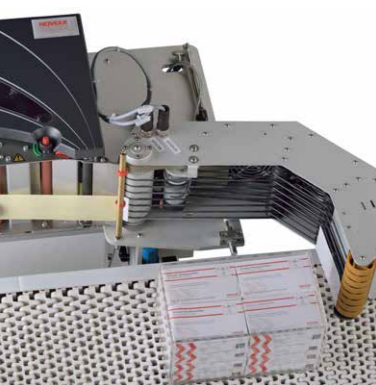


APPLICATORS
Options for a wide range of applications



CORNER-EDGE APPLICATOR

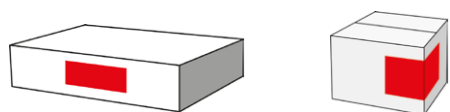
O-ring applicator LA-CE for around the corner application



LA-CE IN A NUTSHELL

- ✓ Corner edge front
- ✓ Corner leading top
- ✓ Moving products

- Easy solution for labeling adjacent two sides of a product with a single label
- Suitable for integration in box closing systems
- Product runs into applicator which applies a label around the corner on the moving product



TECHNICAL SPECIFICATIONS	
Label width	80–130 mm
Label length	160–400 mm
Capacity*	Up to 18 labels/min
Compatibility	ALX 92x

CORNER-EDGE APPLICATOR

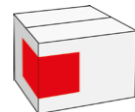
Corner-edge applicator with wipe on function LA-CE Wipe



LA-CE WIPE IN A NUTSHELL

- ✓ Corner edge back
- ✓ Mounted onto conveyor belt
- ✓ Moving products

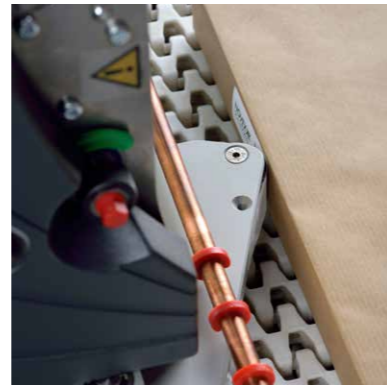
- Pneumatic applicator folds labels around the back corner of rectangular shaped products
- The LA-CE Wipe is mounted directly on the conveyor
- Arm is spring driven around the corner



TECHNICAL SPECIFICATIONS	
Label width	Up to 150 mm
Label length	110–200 mm
Capacity*	Up to 18 labels/min
Compatibility	All ALS and ALX with direct application of labels

WIPE-ON APPLICATOR

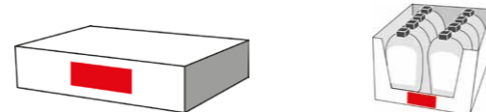
Wipe-on applicator LA-WO for small labels



LA-WO IN A NUTSHELL

- ✓ Side
- ✓ Moving products

- Wipe-on applicator for applying labels onto the side of moving products
- Typical applications: paper reams, doors, windows, flooring
- Ideal for applications with high product speed



TECHNICAL SPECIFICATIONS	
Label width	100–170 mm
Label length	15–20 mm
Capacity*	Up to 40 labels/min
Application accuracy*	+/- 1 mm
Compatibility	ALX 92x

APPLICATOR FOR PRINTERS

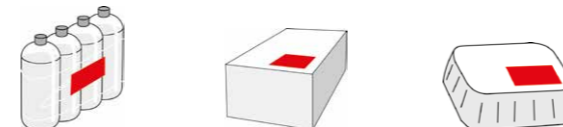
Light touch applicator LTSI/LTSA



LIGHT TOUCH IN A NUTSHELL

- ✓ Top
- ✓ Even and uneven surfaces
- ✓ Stopped products
- ✓ Moving products
- ✓ Products with variable heights

- Application of labels on sensitive products without the need of compressed air
- Suitable for variable product heights
- Applicator extends its 'telescopic arm' until sensor encounters resistance
- Stroke length up to 400 mm (LTSI only)



TECHNICAL SPECIFICATIONS	
Label width	30–80 mm
Label length	30–80 mm
Capacity*	Up to 50 labels/min
Application accuracy*	+/- 1 mm
Compatibility	64-xx dispenser XLP 504 dispenser

TRUST THE EXPERTS

Combine hardware, software and service for better results



Seamless integration

High-performance hardware is one thing, but equally important is a seamless integration into your production environment. The experts at NOVEXX Solutions can support you during this process and beyond.



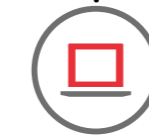
First class service

We take the time to understand your processes and requirements exactly, in order to offer you the optimal solution for your company. We are always at your side – from system development and system integration advice to maintenance and repair.



High quality consumables

For the best print results, benefit from our 40 years' experience in labels and thermal transfer ribbons. We will find the perfect match for your requirements.



Data management software TRACE-it®

TRACE-it® connects, manages and controls all marking tasks in the production process from one central location – regardless of what marking hardware you are using.

* Depending on application speed, stroke length, label size and label material

The information contained herein is believed to be reliable but NOVEXX Solutions makes no representations concerning the accuracy or correctness of the data. The information, like any other should be confirmed independently for the particular end user conditions to ensure the proposed labeling meets the relevant requirements and regulations. © 2018 Novexx Solutions GmbH, All Rights Reserved. Third party trademarks and/or trade names may be used herein are the property of their respective owner(s).

Novexx Solutions GmbH
Ohmstraße 3
85386 Eching
Germany

E-Mail: solutions@novexx.com
Phone: +49 (0)8165 925-299
www.novexx.com

Distributed by: